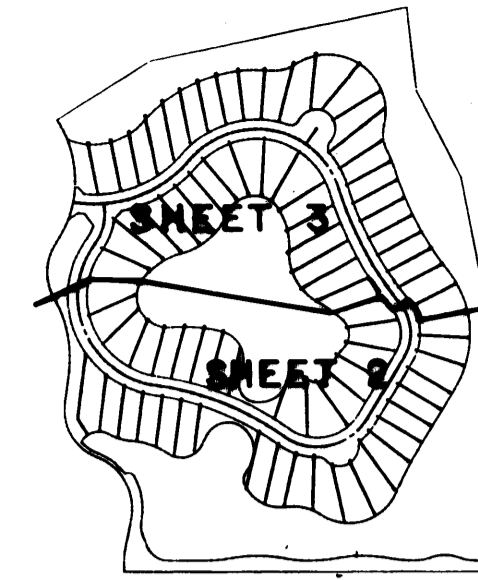


# A PLAT OF PARCEL 52 AT THE MEADOWS

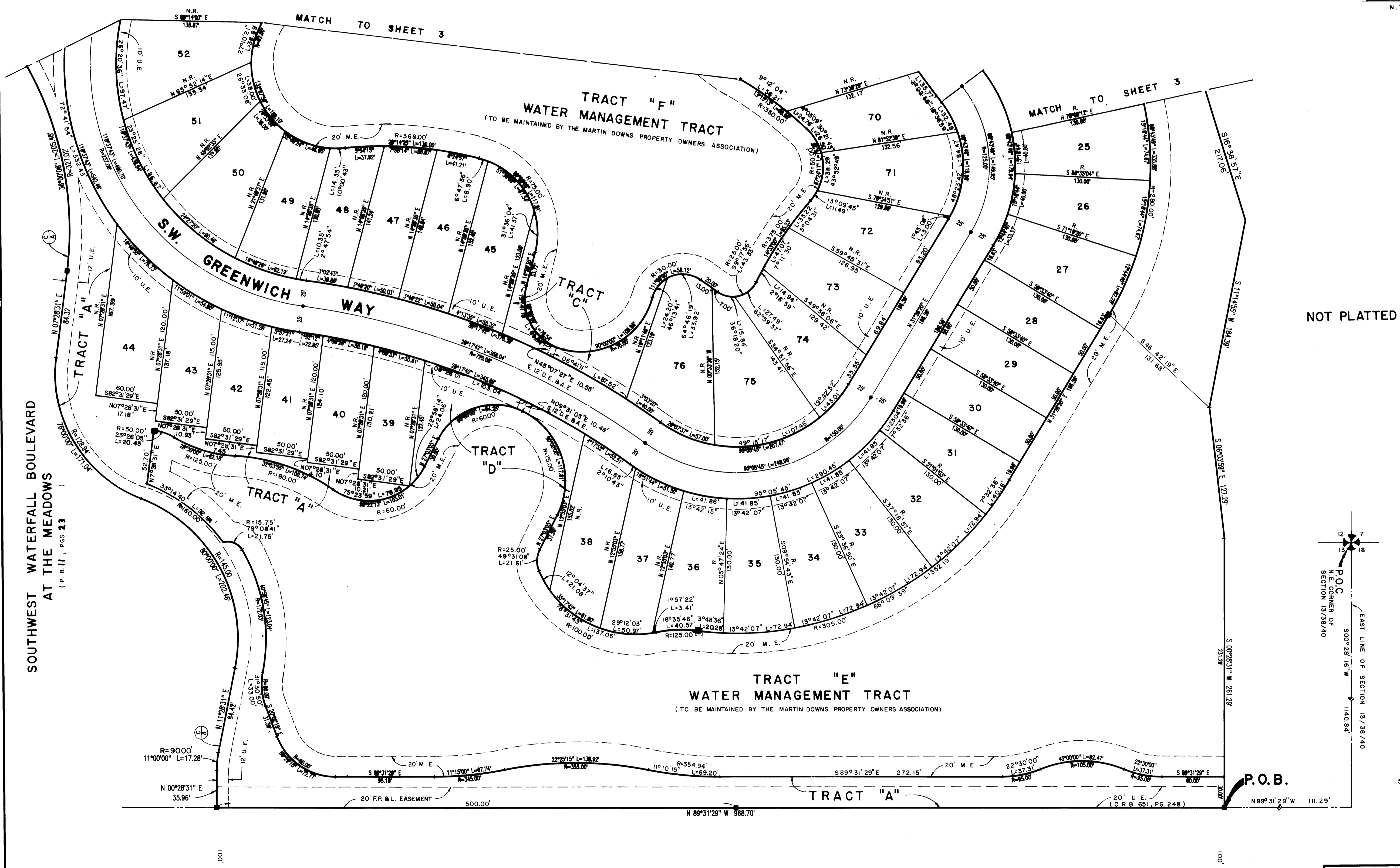
BEING PLAT NO.43 OF MARTIN DOWNS A P.U.D.  
LYING IN SECTIONS 12 AND 13, TOWNSHIP 38 SOUTH, RANGE 40 EAST,  
MARTIN COUNTY, FLORIDA  
SHEET 2 OF 3 MARCH, 1988



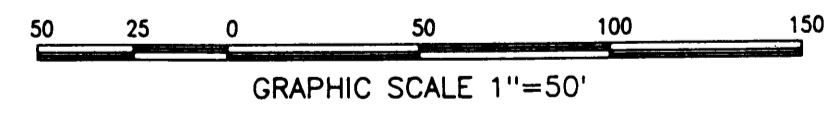
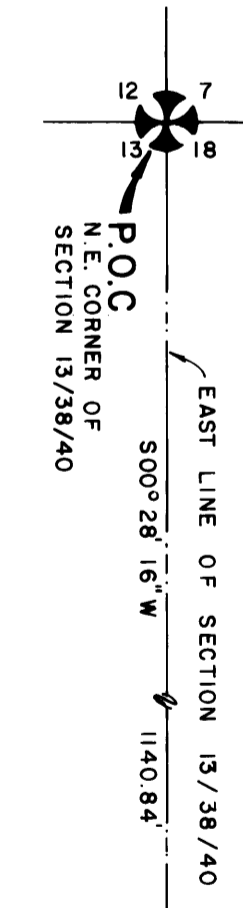
KEY MAP  
N.T.S.



I, MARSHA STILLER, CLERK OF  
THE CIRCUIT COURT OF MARTIN  
COUNTY, FLORIDA, HEREBY CERTIFY  
THAT THIS PLAT WAS FILED FOR  
RECORD IN PLAT BOOK 11,  
PAGE 29, MARTIN COUNTY,  
FLORIDA, PUBLIC RECORDS, THIS  
DAY OF \_\_\_\_\_  
A.D. 19\_\_\_\_\_.  
MARSHA STILLER, CLERK OF  
CIRCUIT COURT  
MARTIN COUNTY, FLORIDA  
BY: \_\_\_\_\_  
DEPUTY CLERK  
FILE NO. \_\_\_\_\_



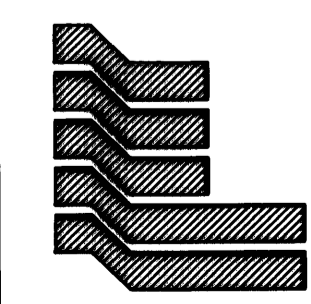
NOT PLATTED



SOUTHWEST WATERFALL BOULEVARD  
AT THE MEADOWS  
(P.B. II, PGS. 23)

MARTIN DOWNS BOULEVARD  
(O.R.B. 461, PG. 420)

P.O.B.



Landmark Surveying & Mapping Inc.  
1850 FOREST HILL BOULEVARD  
PH. (305)433-5405 SUITE 100 W.P.B. FLORIDA  
**PARCEL 52 AT THE MEADOWS**